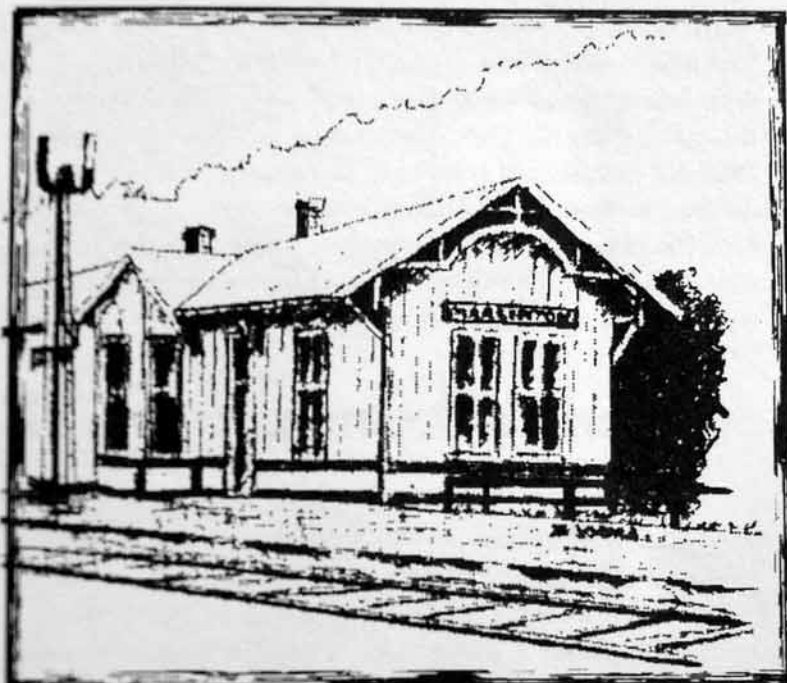


---

May 31 - June 1, 1996

# DEPOT DAYS

Visit the Historic Train Depots along the  
Greenbrier River Line in Pocahontas County!



## Presented By:

GREENBRIER RIVER TRAIL ASSOCIATION  
WEST VIRGINIA RAILS-TO-TRAILS COUNCIL  
POCAHONTAS COUNTY PARKS & RECREATION  
POCAHONTAS COUNTY  
DRAMAS, FAIRS & FESTIVALS  
TOWN OF DURBIN  
MARLINTON RAILROAD DEPOT, INC.  
DURBIN SENIOR CENTER  
POCAHONTAS COUNTY TOURISM COMMISSION  
MOUNTAIN STATE RAILROAD & LOGGING  
HISTORICAL ASSOCIATION



# THE DEPOTS

## Cass Depot: milepost 80.68

The original depot was standard style and located east of the road crossing on the north side of the tracks. In the summer of 1923 the original station was replaced with a larger structure located a few feet east of the first building. The new building was a modified form of the standard depot with low gables at the gables and no peaked roof over the agent's bay window. The agency at Cass was closed in 1965 but the station continued to be used by the Cass scenic railroad. The building was destroyed by fire on May 5, 1973. The state built a new depot based on the 1923 structure but this time with a peaked roof over the bay window. The new building was completed in the spring of 1973.

## Cloverlick Depot: milepost 71.17

The standard depot building here was west of the road crossing and north of the track. As built, it was about 40 feet long. By 1907 however, the freight room was lengthened and the building became 65.5 feet long (16.5 feet wide). The Cloverlick station was closed in 1952. Other facilities included a water tank, a section foreman's house, two bunkhouses, section tool house, and stock pens. The building was purchased by Dr. Brown and was moved not far from its original trackside position. In September of 1995 the station was relocated near its original site. Currently, restoration is being coordinated by the Greenbrier River Trail Association with a grant from the Pocahontas County Tourism Commission and the Intermodal Surface Transportation Efficiency Act.

## Durbin Depot: milepost 95.55

The Durbin depot still exists but has been considerably altered from its original configuration. As originally built, it was a standard style building, 16.5 feet wide, and about 75 feet long. By 1917 the building was lengthened to 109 feet. The Durbin depot handled the business of both the C & O and Western Maryland Railroads. The depot remained open until the closing of the Greenbrier line in 1978. The depot

is now owned by the State of West Virginia and is used as a senior citizens center and craft shop. Other facilities at Durbin included a water tank, coaling platform, engine inspection pit, track scale, office building, section foreman's house, five bunkhouses, section tool house, and stock pens.

## Marlinton Depot: milepost 56.13

The still existing standard depot building here measures 16.5 x 70 feet and is located just east of the Eighth Street crossing. As originally constructed, it had three rooms -- a waiting room, an agent's office, and a freight room. The building was completed in 1901. The C & O station was closed after the last train ran in December of 1978 and the station was entered in the NATIONAL REGISTER OF HISTORICAL PLACES on August 29, 1979. The Marlinton depot is now occupied by the Pocahontas County Tourism Commission and the Visitor's Center is open daily.

Depot information from *The Durbin Route*  
by William Price McNeel

## John Hartford -- In Concert!

Depot Days begins Friday, May 31 with musician/riverboat pilot John Hartford performing his own original music along with old time bluegrass favorites. You'll remember John Hartford from the Glen Campbell



TV show, the Smothers Brothers Comedy Hour, David Letterman, Hee Haw, The Grand Ole Opry and as a guest on Nashville Now. The one man band, playing banjo, fiddle and guitar loves for his audience to dance and, space permitting, will call a figure or two at the end of the set. John Hartford is sure to be a crowd pleaser, come see him on Friday, May 31 at the Marlinton Depot.

## This Concert Is FREE!

## Schedule of Events

Friday, May 31, 1996

Marlinton Depot

6:30pm Opening Band: Free Samples  
7:00pm Musician John Hartford performing

Saturday, June 1, 1996

Cass Depot

All Day

Photo Displays on depots along the Greenbrier River and logging activities at Cass.

Display on Whittaker Camp project.

Book signings with authors George Deike (*Logging on South Cheat*) and Bill McNeel (*The Durbin Route*).

Cloverlick Depot

All Day

West Virginia Rail-Trail Council Representatives

Information and Refreshments.

Durbin Depot

All Day

Historical Display of the Durbin Depot. Lions Club selling rides on a railroad worker's car.

Craft Show and demonstrations of traditional crafts.

9:00am Shuttle for mountain bikers departs for the West Fork Trail.

10:00am-12:00 Durbin Jail House open for Public Viewing.

11:30am-2:30pm Concession Stand for Lunch  
1:00pm-4:30pm Live bluegrass by The Buffalo Chips

Marlinton Depot

All Day

Historical Tours.

Information and Refreshments.

# THE DEPOT

## Cass Depot: milepost 80.68

The original depot was standard style and located east of the road crossing on the north side of the tracks. In the summer of 1923 the original station was replaced with a larger structure located a few feet east of the first building. The new building was a modified form of the standard depot with less gingerbread at the gables and no peaked roof over the agent's bay window. The agency at Cass was closed in 1965 but the station continued to be used by the Cass Scenic Railroad. The building was destroyed by fire on May 5, 1975. The state built a new depot based on the 1923 structure but this time with a peaked roof over the bay window. The new building was completed in the spring of 1979.

## Cloverlick Depot: milepost 71.17

The standard depot building here was west of the road crossing and north of the track. As built, it was about 40 feet long. By 1907 however, the freight room was lengthened and the building became 65.5 feet long (16.5 feet wide). The Cloverlick station was closed in 1952. Other facilities included a water tank, a section foreman's house, two bunkhouses, section tool house, and stock pens. The building was purchased by Dr. Brown and was moved not far from its original trackside position. In September of 1995 the station was relocated near its original site. Currently, restoration is being coordinated by the Greenbrier River Trail Association with a grant from the Pocahontas County Tourism Commission and the Intermodal Surface Transportation Efficiency Act.

## Durbin Depot: milepost 95.55

The Durbin depot still exists but has been considerably altered from its original configuration. As originally built, it was a standard style building, 16.5 feet wide, and about 75 feet long. By 1917 the building was lengthened to 109 feet. The Durbin depot handled the business of both the C & O and Western Maryland Railroads. The depot remained open until the closing of the Greenbrier line in 1978. The depot

is now owned by the senior citizens center. Durbin included a inspection pit, track house, five bunkho

## Marlinton

The still existing, 16.5 x 70 feet and crossing. As original waiting room, an a building was completed after the last station was entered. HISTORICAL PLACES depot is now occupied by the Commission and the Depot I

## John Hartford

Depot Days begins with pilot John Hartford along with old time John Hartford from TV show, the Smokey Comedy Hour, David Haw, The Grand Ole guest on Nashville band, playing banjo loves for his audience space permitting, will be two at the end of the Hartford is sure to be come see him on Friday at Marlinton Depot.

This



# THE DEPOTS

## Milepost 80.68

rd style and located east of  
side of the tracks. In the  
tion was replaced with a  
et east of the first building.  
l form of the standard depot  
ies and no peaked roof over  
ry at Cass was closed in  
be used by the Cass  
e destroyed by fire on May  
ot based on the 1923  
shed roof over the bay  
mpleted in the spring of

## Milepost 71.17

e was west of the road  
uilt, it was about 40  
ght room was length-  
feet long (16.5 feet  
losed in 1962. Other  
ation foreman's house,  
and stock pens. The  
en and was moved not  
on. In September of  
the original site.  
inated by the  
with a grant from the  
ion and the later model

## Milepost 95.55

as lion considerably  
s. As originally built, it  
not wide, and about 75  
lengthened to 109 feet  
se of both the C & O  
e depot remained open  
in 1976. The depot

is now owned by the State of West Virginia and is used as a senior citizens center and craft shop. Other facilities at Durbin included a water tank, coaling platform, engine inspection pit, track scale, office building, section foreman's house, five bunkhouses, section tool house, and stock pens.

## Marlinton Depot: milepost 56.13

The still existing standard depot building here measures 16.5 x 70 feet and is located just east of the Eighth Street crossing. As originally constructed, it had three rooms -- a waiting room, an agent's office, and a freight room. The building was completed in 1901. The C & O station was closed after the last train ran in December of 1978 and the station was entered in the NATIONAL REGISTER OF HISTORICAL PLACES on August 29, 1979. The Marlinton depot is now occupied by the Pocahontas County Tourism Commission and the Visitor's Center is open daily.

Depot Information from *The Durbin Route*  
by William Price McNeel

## John Hartford -- In Concert!

Depot Days begins Friday, May 31 with musician/riverboat pilot John Hartford performing his own original music along with old time bluegrass favorites. You'll remember John Hartford from the Glen Campbell TV show, the Smothers Brothers Comedy Hour, David Letterman, Hee Haw, The Grand Ole Opry and as a guest on Nashville Now. The one man band, playing banjo, fiddle and guitar loves for his audience to dance and, space permitting, will call a figure or two at the end of the set. John Hartford is sure to be a crowd pleaser, come see him on Friday, May 31 at the Marlinton Depot.



**This Concert Is FREE!**

Sc  
F

6:30pm  
7:00pm

Sat

Photo  
Greenbrie

Display

Book sign  
(Logg  
Mc

West

Info

Historica  
Lions C

Craft

9:00am Shut

10:00am-12:00

11:30am-2:30

1:00pm-4:30p

Infor

## Schedule of Events

Friday, May 31, 1996

### Marlinton Depot

6:30pm Opening Band: **Free Samples**  
7:00pm Musician **John Hartford**  
performing

Saturday, June 1, 1996

### Cass Depot

*All Day*

Photo Displays on depots along the  
Greenbrier River and logging activities at  
Cass.

Display on Whittaker Camp project.

Book signings with authors George Deike  
(*Logging on South Cheat*) and Bill  
McNeel (*The Durbin Route*).

### Cloverlick Depot

*All Day*

West Virginia Rail-Trail Council  
Representatives

Information and Refreshments.

### Durbin Depot

*All Day*

Historical Display of the Durbin Depot.  
Lions Club selling rides on a railroad  
worker's car.

Craft Show and demonstrations of  
traditional crafts.

9:00am Shuttle for mountain bikers departs for  
the West Fork Trail.

10:00am-12:00 Durbin Jail House open for Public  
Viewing.

11:30am-2:30pm Concession Stand for Lunch  
1:00pm-4:30pm Live bluegrass by **The Buffalo  
Chips**

### Marlinton Depot

*All Day*

Historical Tours.

Information and Refreshments.

West Virginia and is used as  
raft shop. Other facilities at  
coaling platform, engine  
ce building, section foreman's  
tool house, and stock pens.

ot: milepost 56.13

epot building here measures  
at east of the Eighth Street  
ted, it had three rooms -- a  
and a freight room. The

The C & O station was  
s December of 1978 and the  
IONAL REGISTER OF HIS-

29, 1979. The Marlinton  
cuhuntas County Tourism  
enter is open daily.

*The Durbin Route*  
at Michie!

## - In Concert!

ll with musician/riverboat  
is own original music  
various. You'll remember  
ngbill

llow  
e a  
man  
what  
ed,  
or at

cannot,  
at the

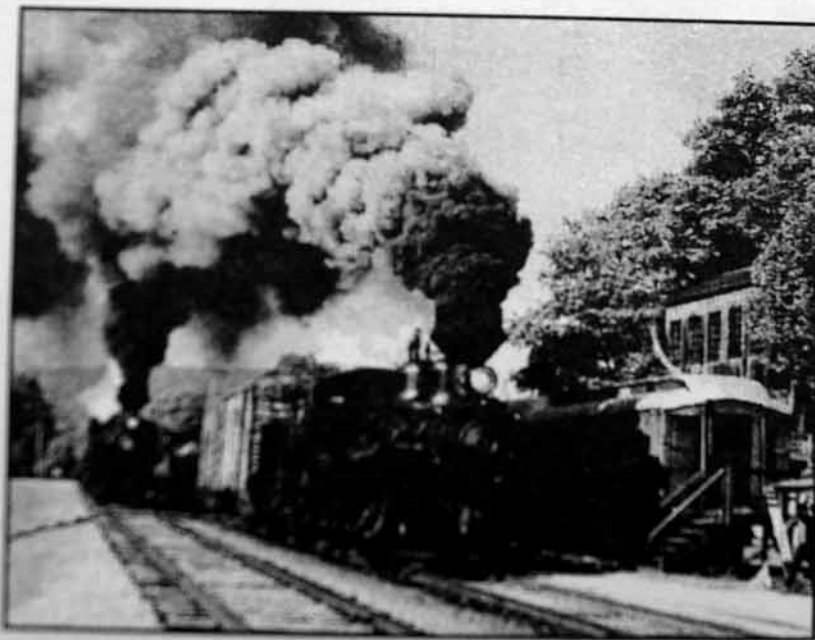
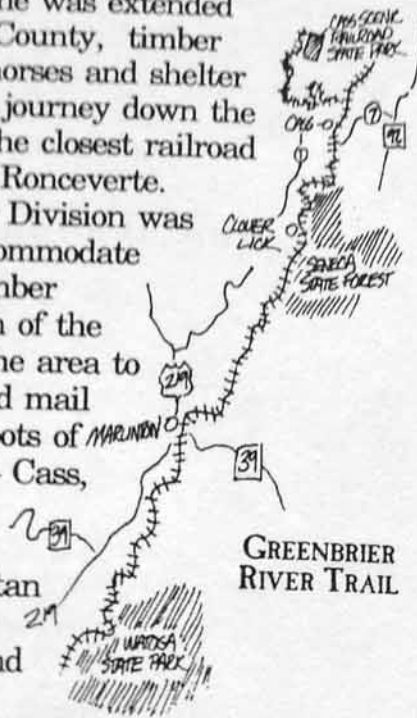


rt is FREE!

## POCAHONTAS COUNTY DEPOTS

Before the railroad line was extended north to Pocahontas County, timber producers sent logs, horses and shelter on a treacherous raft journey down the Greenbrier River to the closest railroad station which was in Ronceverte.

While the Greenbrier Division was primarily built to accommodate the area's thriving timber industry, construction of the railway also opened the area to passenger, freight and mail service. The four Depots of Pocahontas County — Cass, Cloverlick, Durbin and Marlinton were gateways to metropolitan areas and allowed the local industry to expand and prosper.



E D

0.68  
 ted east of  
 . In the  
 d with a  
 st building.  
 ndard depot  
 d roof over  
 closed in  
 Cass  
 re on May  
 1923  
 se bay  
 spring of

71.17  
 he road  
 out 40  
 length-  
 feet  
 ther  
 s house,  
 . The  
 red mat  
 er of  
 .  
 on the  
 sterminal

55  
 unity  
 1911, it  
 dunt 75  
 (15 feet.  
 C & O  
 and open  
 e depot

## NATIONAL TRAIL DAYS

June 1, 1996

The American Hiking Society introduced National Trails Day in 1993 as part of its ongoing campaign for Trails for All Americans — a plan to create a nationwide system of greenways that would come within 15 minutes of every American's home or work place. National Trails Day has generated public enthusiasm for development of trails for hiking and biking. Now in its third year, this event partners with Depot Days in a celebration of the abundant recreational opportunities in Pocahontas County.



### GREENBRIER RIVER TRAIL

This converted rail trail is one of the country's longest and most scenic. Starting in Cass and ending 76 miles south in Caldwell, the trail is the original C&O Greenbrier line. The surface is packed limestone at less than one percent grade. Two tunnels and thirty five bridges help make this a wonderful route for the family. Stronger cyclists will enjoy making loops with adjoining country lanes and singletrack. Three days are recommended to ride the entire trail. Due to 1996 flood damage call 1-800-336-7009 for updates on trail conditions.



**TOURISM COMMISSION**  
**1-800-336-7009**